

## HIGHLIGHTS OF PRESCRIBING INFORMATION

These highlights do not include all the information needed to use ZYDELIG safely and effectively. See full prescribing information for ZYDELIG.

ZYDELIG® (idelalisib) tablets, for oral use  
Initial U.S. Approval: 2014

### **WARNING: FATAL AND SERIOUS TOXICITIES: HEPATIC, SEVERE DIARRHEA, COLITIS, PNEUMONITIS, INFECTIONS, and INTESTINAL PERFORATION**

See full prescribing information for complete boxed warning.

- Fatal and/or serious hepatotoxicity occurred in 11% to 18% of Zydelig-treated patients. Monitor hepatic function prior to and during treatment. Interrupt and then reduce or discontinue Zydelig. (5.1)
- Fatal and/or serious and severe diarrhea or colitis occurred in 14% to 19% of Zydelig-treated patients. Monitor for the development of severe diarrhea or colitis. Interrupt and then reduce or discontinue Zydelig. (5.2)
- Fatal and/or serious pneumonitis occurred in 4% of Zydelig-treated patients. Monitor for pulmonary symptoms and bilateral interstitial infiltrates. Interrupt or discontinue Zydelig. (5.3)
- Fatal and/or serious infections occurred in 21% to 36% of Zydelig-treated patients. Monitor for signs and symptoms of infection. Interrupt Zydelig if infection is suspected. (5.4)
- Fatal and serious intestinal perforation can occur in Zydelig-treated patients across clinical trials. Discontinue Zydelig if intestinal perforation is suspected. (5.5)

### -----RECENT MAJOR CHANGES-----

Boxed Warning	(09/2016)
Indications and Usage (1.1, 1.2, 1.3)	(09/2016)
Dosage and Administration (2.2)	(09/2016)
Warnings and Precautions (5.3, 5.4, 5.6)	(09/2016)

### -----INDICATIONS AND USAGE-----

Zydelig is a kinase inhibitor indicated for the treatment of patients with:

- Relapsed chronic lymphocytic leukemia (CLL), in combination with rituximab, in patients for whom rituximab alone would be considered appropriate therapy due to other co-morbidities. (1.1)
- Relapsed follicular B-cell non-Hodgkin lymphoma (FL) in patients who have received at least two prior systemic therapies. (1.2)
- Relapsed small lymphocytic lymphoma (SLL) in patients who have received at least two prior systemic therapies. (1.3)

#### Limitation of use:

Zydelig is not indicated and is not recommended for first-line treatment of any patient. (1.1, 1.2, 1.3)

Accelerated approval was granted for FL and SLL based on overall response rate. Improvement in patient survival or disease related symptoms has not been established. Continued approval for these indications may be contingent upon verification of clinical benefit in confirmatory trials.

### -----DOSAGE AND ADMINISTRATION-----

Recommended starting dose: 150 mg orally, twice daily. (2.1)

### -----DOSAGE FORMS AND STRENGTHS-----

Tablets: 150 mg, 100 mg. (3)

### -----CONTRAINDICATIONS-----

History of serious allergic reactions including anaphylaxis and toxic epidermal necrolysis. (4)

### -----WARNINGS AND PRECAUTIONS-----

- Severe cutaneous reactions: Monitor patients for the development of severe cutaneous reactions and discontinue Zydelig. (5.6)
- Anaphylaxis: Monitor patients for anaphylaxis and discontinue Zydelig. (5.7)
- Neutropenia: monitor blood counts. (5.8)
- Embryo-fetal toxicity: may cause fetal harm. Advise women of potential risk to a fetus and to avoid pregnancy while taking Zydelig. (5.9)

### -----ADVERSE REACTIONS-----

The most common adverse reactions (incidence  $\geq 20\%$ ) in patients treated with Zydelig in the monotherapy trial are diarrhea, fatigue, nausea, cough, pyrexia, abdominal pain, pneumonia, and rash. (6.1)

The most common adverse reactions (incidence  $\geq 30\%$ ) in patients treated with Zydelig in combination trials are diarrhea, pneumonia, pyrexia, fatigue, rash, cough, and nausea. (6.1)

Common laboratory abnormalities include neutropenia, ALT elevations and AST elevations. (6.1)

**To report SUSPECTED ADVERSE REACTIONS, contact Gilead Sciences, Inc. at 1-800-GILEAD-5 or FDA at 1-800-FDA-1088 or [www.fda.gov/medwatch](http://www.fda.gov/medwatch)**

### -----DRUG INTERACTIONS-----

- CYP3A inducers: Avoid coadministration of strong CYP3A inducers with Zydelig. (7.1)
- CYP3A substrates: Avoid coadministration of CYP3A substrates with Zydelig. (7.2)

### -----USE IN SPECIFIC POPULATIONS-----

Nursing mothers: Discontinue drug or nursing. (8.3)

**See 17 for PATIENT COUNSELING INFORMATION and Medication Guide.**

Revised: 09/2016

**FULL PRESCRIBING INFORMATION: CONTENTS\***

**WARNING: FATAL AND SERIOUS TOXICITIES: HEPATIC, SEVERE DIARRHEA, COLITIS, PNEUMONITIS, INFECTIONS, and  
INTESTINAL PERFORATION**

**1 INDICATIONS AND USAGE**

- 1.1 Relapsed Chronic Lymphocytic Leukemia
- 1.2 Relapsed Follicular B-cell non-Hodgkin Lymphoma
- 1.3 Relapsed Small Lymphocytic Lymphoma

**2 DOSAGE AND ADMINISTRATION**

- 2.1 Recommended Dose
- 2.2 Dose Modification

**3 DOSAGE FORMS AND STRENGTHS**

**4 CONTRAINDICATIONS**

**5 WARNINGS AND PRECAUTIONS**

- 5.1 Hepatotoxicity
- 5.2 Severe Diarrhea or Colitis
- 5.3 Pneumonitis
- 5.4 Infections
- 5.5 Intestinal Perforation
- 5.6 Severe Cutaneous Reactions
- 5.7 Anaphylaxis
- 5.8 Neutropenia
- 5.9 Embryo-fetal Toxicity

**6 ADVERSE REACTIONS**

- 6.1 Clinical Trial Experience

**7 DRUG INTERACTIONS**

- 7.1 Effects of Other Drugs on Zydelig
- 7.2 Effects of Zydelig on Other Drugs

**8 USE IN SPECIFIC POPULATIONS**

- 8.1 Pregnancy
- 8.3 Nursing Mothers
- 8.4 Pediatric Use
- 8.5 Geriatric Use
- 8.6 Females of Reproductive Potential
- 8.7 Renal Impairment
- 8.8 Hepatic Impairment

**11 DESCRIPTION**

**12 CLINICAL PHARMACOLOGY**

- 12.1 Mechanism of Action
- 12.2 Pharmacodynamics
- 12.3 Pharmacokinetics

**13 NONCLINICAL TOXICOLOGY**

- 13.1 Carcinogenesis, Mutagenesis, Impairment of Fertility
- 13.2 Animal Pharmacology and/or Toxicology

**14 CLINICAL STUDIES**

- 14.1 Relapsed Chronic Lymphocytic Leukemia
- 14.2 Relapsed Follicular B-cell non-Hodgkin Lymphoma
- 14.3 Relapsed Small Lymphocytic Lymphoma

**16 HOW SUPPLIED/STORAGE AND HANDLING**

**17 PATIENT COUNSELING INFORMATION**

\* Sections or subsections omitted from the full prescribing information are not listed.

---

## FULL PRESCRIBING INFORMATION

### **WARNING: FATAL AND SERIOUS TOXICITIES: HEPATIC, SEVERE DIARRHEA, COLITIS, PNEUMONITIS, INFECTIONS, and INTESTINAL PERFORATION**

- Fatal and/or serious hepatotoxicity occurred in 11 to 18% of Zydelig-treated patients. Monitor hepatic function prior to and during treatment. Interrupt and then reduce or discontinue Zydelig as recommended [see *Dosage and Administration (2.2), Warnings and Precautions (5.1)*].
- Fatal and/or serious and severe diarrhea or colitis occurred in 14% to 19% of Zydelig-treated patients. Monitor for the development of severe diarrhea or colitis. Interrupt and then reduce or discontinue Zydelig as recommended [see *Dosage and Administration (2.2), Warnings and Precautions (5.2)*].
- Fatal and/or serious pneumonitis occurred in 4% of Zydelig-treated patients. Monitor for pulmonary symptoms and bilateral interstitial infiltrates. Interrupt or discontinue Zydelig as recommended [see *Dosage and Administration (2.2), Warnings and Precautions (5.3)*].
- Fatal and/or serious infections occurred in 21% to 36% of Zydelig-treated patients. Monitor for signs and symptoms of infection. Interrupt Zydelig if infection is suspected [see *Dosage and Administration (2.2), Warnings and Precautions (5.4)*].
- Fatal and serious intestinal perforation can occur in Zydelig-treated patients across clinical trials. Discontinue Zydelig for intestinal perforation [see *Warnings and Precautions (5.5)*].

## 1 INDICATIONS AND USAGE

### 1.1 Relapsed Chronic Lymphocytic Leukemia

Zydelig is indicated, in combination with rituximab, for the treatment of patients with relapsed chronic lymphocytic leukemia (CLL) for whom rituximab alone would be considered appropriate therapy due to other co-morbidities.

#### Limitation of Use

Zydelig is not indicated and is not recommended for first line treatment of patients with CLL.

### 1.2 Relapsed Follicular B-cell non-Hodgkin Lymphoma

Zydelig is indicated for the treatment of patients with relapsed follicular B-cell non-Hodgkin lymphoma (FL) who have received at least two prior systemic therapies.

Accelerated approval was granted for this indication based on Overall Response Rate [see *Clinical Studies (14.2)*]. An improvement in patient survival or disease related

symptoms has not been established. Continued approval for this indication may be contingent upon verification of clinical benefit in confirmatory trials.

#### Limitation of Use

Zydelig is not indicated and is not recommended for first line treatment of patients with FL.

### **1.3 Relapsed Small Lymphocytic Lymphoma**

Zydelig is indicated for the treatment of patients with relapsed small lymphocytic lymphoma (SLL) who have received at least two prior systemic therapies.

Accelerated approval was granted for this indication based on Overall Response Rate [see *Clinical Studies (14.3)*]. An improvement in patient survival or disease related symptoms has not been established. Continued approval for this indication may be contingent upon verification of clinical benefit in confirmatory trials.

#### Limitation of Use

Zydelig is not indicated and is not recommended for first line treatment of patients with SLL.

## **2 DOSAGE AND ADMINISTRATION**

### **2.1 Recommended Dosage**

The recommended maximum starting dose of Zydelig is 150 mg administered orally twice daily.

Zydelig can be taken with or without food. Tablets should be swallowed whole.

Continue treatment until disease progression or unacceptable toxicity. The optimal and safe dosing regimen for patients who receive treatment longer than several months is unknown.

### **2.2 Dose Modification**

See the table below for dose modification instructions for specific toxicities related to Zydelig. For other severe or life-threatening toxicities related to Zydelig, withhold drug until toxicity is resolved. If resuming Zydelig after interruption for other severe or life-threatening toxicities, reduce the dose to 100 mg twice daily. Recurrence of other severe or life-threatening Zydelig-related toxicity upon rechallenge should result in permanent discontinuation of Zydelig.

**Table 1 Dose Modifications for Toxicities Due to Zydelig**

<b>Pneumonitis</b>	<b>Any symptomatic pneumonitis</b>		
	Discontinue Zydelig in patients with any severity of symptomatic pneumonitis		
<b>ALT/AST</b>	<b>&gt;3-5 x ULN</b>	<b>&gt;5-20 x ULN</b>	<b>&gt;20 x ULN</b>
	Maintain Zydelig dose. Monitor at least weekly until $\leq 1$ x ULN.	Withhold Zydelig. Monitor at least weekly until ALT/AST are $\leq 1$ x ULN, then may resume Zydelig at 100 mg BID.	Discontinue Zydelig permanently.
<b>Bilirubin</b>	<b><u>&gt;1.5-3 x ULN</u></b>	<b><u>&gt;3-10 x ULN</u></b>	<b><u>&gt;10 x ULN</u></b>
	Maintain Zydelig dose. Monitor at least weekly until $\leq 1$ x ULN.	Withhold Zydelig. Monitor at least weekly until bilirubin is $\leq 1$ x ULN, then may resume Zydelig at 100 mg BID.	Discontinue Zydelig permanently.
<b>Diarrhea*</b>	<b>Moderate diarrhea</b>	<b>Severe diarrhea or hospitalization</b>	<b>Life-threatening diarrhea</b>
	Maintain Zydelig dose. Monitor at least weekly until resolved.	Withhold Zydelig. Monitor at least weekly until resolved, then may resume Zydelig at 100 mg BID.	Discontinue Zydelig permanently.
<b>Neutropenia</b>	<b><u>ANC 1.0 to &lt;1.5 Gi/L</u></b>	<b><u>ANC 0.5 to &lt;1.0 Gi/L</u></b>	<b><u>ANC &lt;0.5 Gi/L</u></b>
	Maintain Zydelig dose.	Maintain Zydelig dose. Monitor ANC at least weekly.	Interrupt Zydelig. Monitor ANC at least weekly until ANC $\geq 0.5$ Gi/L, then may resume Zydelig at 100 mg BID.
<b>Thrombocytopenia</b>	<b><u>Platelets 50 to &lt;75 Gi/L</u></b>	<b><u>Platelets 25 to &lt;50 Gi/L</u></b>	<b><u>Platelets &lt;25 Gi/L</u></b>
	Maintain Zydelig dose.	Maintain Zydelig dose. Monitor platelet counts at least weekly.	Interrupt Zydelig. Monitor platelet count at least weekly. May resume Zydelig at 100 mg BID when platelets $\geq 25$ Gi/L.
<b>Infections</b>	<b>Grade 3 or higher sepsis or pneumonia</b>		
	Interrupt Zydelig until infection has resolved.		
	<b>Evidence of CMV infection or viremia</b>		
	Interrupt Zydelig in patients with evidence of CMV infection of any grade or viremia (positive PCR or antigen test) until the infection has resolved. If Zydelig is resumed, monitor patients (by PCR or antigen test) for CMV reactivation at least monthly.		
	<b>Evidence of PJP infection</b>		

	Interrupt Zydelig in patients with suspected PJP infection of any grade. Permanently discontinue Zydelig if PJP infection is confirmed.
Abbreviations: ALT, alanine aminotransferase; AST, aspartate aminotransferase; BID, twice daily; ULN, upper limit of normal; CMV, cytomegalovirus; PCR: polymerase chain reaction; PJP: <i>Pneumocystis jirovecii</i> pneumonia	

\*Moderate diarrhea: increase of 4–6 stools per day over baseline; severe diarrhea: increase of ≥7 stools per day over baseline.

### 3 DOSAGE FORMS AND STRENGTHS

150 mg tablets: pink, oval-shaped, film-coated tablet debossed with “GSI” on one side and “150” on the other side.

100 mg tablets: orange, oval-shaped, film-coated tablet debossed with “GSI” on one side and “100” on the other side.

### 4 CONTRAINDICATIONS

History of serious allergic reactions including anaphylaxis and toxic epidermal necrolysis.

### 5 WARNINGS AND PRECAUTIONS

#### 5.1 Hepatotoxicity

Fatal and/or serious hepatotoxicity occurred in 18% of patients treated with Zydelig monotherapy and 11% of patients treated with Zydelig in combination trials. Elevations in ALT or AST greater than 5 times the upper limit of normal have occurred [see *Adverse Reactions (6.1)*]. These findings were generally observed within the first 12 weeks of treatment and were reversible with dose interruption. After resumption of treatment at a lower dose, 26% of patients had recurrence of ALT and AST elevations. Discontinue Zydelig for recurrent hepatotoxicity.

Avoid concurrent use of Zydelig with other drugs that may cause liver toxicity.

Monitor ALT and AST in all patients every 2 weeks for the first 3 months of treatment, every 4 weeks for the next 3 months, then every 1 to 3 months thereafter. Monitor weekly for liver toxicity if the ALT or AST rises above 3 times the upper limit of normal until resolved. Withhold Zydelig if the ALT or AST is greater than 5 times the upper limit of normal, and continue to monitor AST, ALT and total bilirubin weekly until the abnormality is resolved [see *Dosage and Administration (2.2)*].

#### 5.2 Severe Diarrhea or Colitis

Severe diarrhea or colitis (Grade 3 or higher) occurred in 14% of patients treated with Zydelig monotherapy and 19% of patients treated with Zydelig in combination trials [see *Adverse Reactions (6.1)*]. Diarrhea can occur at any time. Avoid concurrent use of Zydelig and other drugs that cause diarrhea. Diarrhea due to Zydelig responds poorly to

antimotility agents. Median time to resolution ranged between 1 week and 1 month across trials, following interruption of Zydelig therapy and in some instances, use of corticosteroids [see *Dosage and Administration (2.2)*].

### **5.3 Pneumonitis**

Fatal and serious pneumonitis occurred in patients treated with Zydelig. In randomized clinical trials of combination therapies, pneumonitis occurred in 4% of patients treated with Zydelig compared to 1% on the comparator arms. Time to onset of pneumonitis ranged from <1 to 15 months. Patients taking Zydelig who present with pulmonary symptoms such as cough, dyspnea, hypoxia, interstitial infiltrates on a radiologic exam, or a decline by more than 5% in oxygen saturation should be evaluated for pneumonitis. If pneumonitis is suspected, interrupt Zydelig until the etiology of the pulmonary symptoms has been determined. Patients with pneumonitis thought to be caused by Zydelig have been treated with discontinuation of Zydelig and administration of corticosteroids.

### **5.4 Infections**

Fatal and/or serious infections occurred in 21% of patients treated with Zydelig monotherapy and 36% of patients treated with Zydelig in combination trials. The most common infections were pneumonia, sepsis, and febrile neutropenia. Monitor patients for signs and symptoms of infection and interrupt Zydelig for Grade 3 or higher infection [see *Dosage and Administration (2.2)*].

Serious or fatal *Pneumocystis jirovecii* pneumonia (PJP) or cytomegalovirus (CMV) occurred in <1% of patients treated with Zydelig. Consider prophylaxis for PJP. Interrupt Zydelig in patients with suspected PJP infection of any grade, and permanently discontinue Zydelig if PJP infection of any grade is confirmed. Interrupt Zydelig in the setting of positive CMV PCR or antigen test until the infection has resolved. If Zydelig is subsequently resumed, patients should be monitored (by PCR or antigen test) for CMV reactivation at least monthly [see *Dosage and Administration (2.2)*].

### **5.5 Intestinal Perforation**

Fatal and serious intestinal perforation occurred in Zydelig-treated patients. At the time of perforation, some patients had moderate to severe diarrhea. Advise patients to promptly report any new or worsening abdominal pain, chills, fever, nausea, or vomiting. Discontinue Zydelig permanently in patients who experience intestinal perforation.

### **5.6 Severe Cutaneous Reactions**

Fatal cases of Stevens-Johnson syndrome (SJS) and toxic epidermal necrolysis (TEN) have occurred in patients treated with Zydelig. If SJS or TEN is suspected, interrupt Zydelig until the etiology of the reaction has been determined. If SJS or TEN is confirmed, permanently discontinue Zydelig.

Other severe or life-threatening (Grade  $\geq 3$ ) cutaneous reactions, including dermatitis exfoliative, rash, rash erythematous, rash generalized, rash macular, rash maculo-

papular, rash papular, rash pruritic, exfoliative rash, and skin disorder, have been reported in Zydelig-treated patients. Monitor patients for the development of severe cutaneous reactions and discontinue Zydelig.

### **5.7 Anaphylaxis**

Serious allergic reactions, including anaphylaxis, have been reported in patients on Zydelig. In patients who develop serious allergic reactions, discontinue Zydelig permanently and institute appropriate supportive measures.

### **5.8 Neutropenia**

Treatment-emergent Grade 3 or 4 neutropenia occurred in 25% of patients treated with Zydelig monotherapy and 46% of patients treated with Zydelig in combination trials. Monitor blood counts at least every 2 weeks for the first 6 months of therapy, and at least weekly in patients while neutrophil counts are less than 1.0 Gi/L [see *Dosage and Administration* (2.2)].

### **5.9 Embryo-fetal Toxicity**

Based on findings in animals, Zydelig may cause fetal harm when administered to a pregnant woman. Idelalisib is teratogenic in rats, at systemic exposures 12 times those reported in patients at the recommended dose of 150 mg twice daily. If this drug is used during pregnancy, or if the patient becomes pregnant while taking this drug, the patient should be apprised of the potential hazard to a fetus [see *Use in Specific Populations* (8.1)].

Advise females of reproductive potential to avoid becoming pregnant while taking Zydelig. If contraceptive methods are being considered, use effective contraception during treatment, and for at least 1 month after the last dose of Zydelig [see *Use in Specific Populations* (8.6)].

## **6 ADVERSE REACTIONS**

The following serious adverse reactions have been associated with Zydelig in clinical trials and are discussed in greater detail in other sections of the prescribing information.

- Hepatotoxicity [see *Warnings and Precautions* (5.1)]
- Severe Diarrhea or Colitis [see *Warnings and Precautions* (5.2)]
- Pneumonitis [see *Warnings and Precautions* (5.3)]
- Infections [see *Warnings and Precautions* (5.4)]
- Intestinal Perforation [see *Warnings and Precautions* (5.5)]
- Severe Cutaneous Reactions [see *Warnings and Precautions* (5.6)]
- Anaphylaxis [see *Warnings and Precautions* (5.7)]
- Neutropenia [see *Warnings and Precautions* (5.8)]



## 6.1 Clinical Trial Experience

Because clinical trials are conducted under widely varying conditions, adverse reaction rates observed in the clinical trials of a drug cannot be directly compared to rates in the clinical trials of another drug and may not reflect the rates observed in practice.

### **Summary of Clinical Trials in Chronic Lymphocytic Leukemia**

The safety data reflect subject exposure to Zydelig from Study 1, in which 218 subjects with relapsed CLL received up to 8 doses of rituximab with or without Zydelig 150 mg twice daily. The median duration of exposure to Zydelig was 8 months.

Serious adverse reactions were reported in 65 (59%) subjects treated with Zydelig + rituximab. The most frequent serious adverse reactions reported for subjects treated with Zydelig were pneumonia (23%), diarrhea (10%), pyrexia (9%), sepsis (8%), and febrile neutropenia (5%). Adverse reactions that led to discontinuation of Zydelig occurred in 19 (17%) subjects. The most common adverse reactions that led to treatment discontinuations were hepatotoxicity and diarrhea/colitis.

Forty-two subjects (38%) had dose interruptions and sixteen subjects (15%) had dose reductions due to adverse reactions or laboratory abnormalities. The most common reasons for dose interruptions or reductions were pneumonia, diarrhea or colitis, rash, and elevated transaminases.

Table 2 and Table 3 summarize common adverse reactions and laboratory abnormalities reported for Zydelig + rituximab and placebo + rituximab arms.

**Table 2 Adverse Reactions Reported in  $\geq 5\%$  of Patients with CLL and which Occurred at  $\geq 2\%$  Higher Incidence in Subjects Receiving Zydelig**

Adverse Reaction	Zydelig + Rituximab N=110 (%)		Placebo + Rituximab N=108 (%)	
	Any Grade	Grade $\geq 3$	Any Grade	Grade $\geq 3$
Gastrointestinal disorders				
diarrhea <sup>(a)</sup>	35 (32)	12 (11)	20 (19)	0
nausea	30 (27)	1 (1)	25 (23)	0
abdominal pain <sup>(b)</sup>	20 (18)	1 (1)	17 (16)	2 (2)
vomiting	17 (15)	0	9 (8)	0
gastroesophageal reflux disease	11 (10)	1 (1)	0	0
stomatitis	7 (6)	2 (2)	1 (1)	0
Nervous system disorders				
lethargy	6 (5)	0	2 (2)	0
General disorders and administration site conditions				

pyrexia	44 (40)	3 (3)	20 (19)	1 (1)
chills	27 (25)	2 (2)	17 (16)	0
pain	8 (7)	0	1 (1)	0
Skin and subcutaneous tissue disorders				
rash <sup>(c)</sup>	27 (25)	4 (4)	7 (6)	1 (1)
Respiratory, thoracic, and mediastinal disorders				
pneumonia <sup>(d)</sup>	33 (30)	23 (21)	20 (19)	14 (13)
Infections and infestations				
sepsis <sup>(e)</sup>	10 (9)	10 (9)	4 (4)	4 (4)
sinusitis	9 (8)	0	6 (6)	0
urinary tract infection	9 (8)	1 (1)	4 (4)	2 (2)
bronchitis	8 (7)	1 (1)	5 (5)	1 (1)
oral herpes	6 (5)	1 (1)	3 (3)	0
Musculoskeletal and connective tissue disorders				
arthralgia	9 (8)	1 (1)	4 (4)	0
Metabolism and Nutrition Disorders				
decreased appetite	18 (16)	2 (2)	12 (11)	2 (2)
dehydration	7 (6)	3 (3)	0	0
Psychiatric disorders				
insomnia	10 (9)	0	7 (6)	0

(a) Diarrhea includes the following preferred terms: diarrhea, colitis.

(b) Abdominal pain includes the following preferred terms: abdominal pain, abdominal pain upper, abdominal pain lower.

(c) Rash includes the following preferred terms: dermatitis exfoliative, drug eruption, rash, rash erythematous, rash generalized, rash macular, rash maculo-papular, rash papular, rash pruritic, rash morbilliform, and exfoliative rash.

(d) Pneumonia includes the terms: pneumonia, pneumonitis, lung infection, lung infiltration, pneumocystis jiroveci pneumonia, pneumonia legionella, lung infection pseudomonal, pneumonia fungal, respiratory tract infection, lower respiratory tract infection, and lower respiratory tract infection bacterial.

(e) Sepsis includes the terms: sepsis, septic shock, neutropenic sepsis, and sepsis syndrome.

**Table 3 Treatment-emergent Laboratory Abnormalities Reported in ≥10% of CLL Patients Occurring at a ≥5% Higher Incidence in Subjects Receiving Zydelig**

Laboratory Parameter	Zydelig + Rituximab N=110 (%)		Placebo + Rituximab N=108 (%)	
	Any Grade	Grade 3–4	Any Grade	Grade 3–4
Hematology abnormalities				

neutropenia	71 (65)	46 (42)	61 (56)	33 (31)
leukopenia	34 (31)	9 (8)	25 (23)	9 (8)
lymphocytopenia	23 (21)	11 (10)	13 (12)	4 (4)
Serum chemistry abnormalities				
ALT increased	43 (39)	10 (9)	13 (12)	1 (1)
AST increased	31 (28)	6 (5)	16 (15)	0

After closure of Study 1, 71 patients continued treatment with Zydelig on an extension study. The median duration of exposure was 18 months. Serious adverse reactions occurred in 48 (68%) subjects. The most frequent serious adverse reactions reported were pneumonia (30%), diarrhea (15%), and pyrexia (11%).

The most frequent adverse reactions were pneumonia (51%), pyrexia (46%), and cough (45%). The most frequent Grade 3 or greater adverse reactions were pneumonia (30%), diarrhea (15%), and sepsis (10%).

### ***Summary of Clinical Trials in Indolent Non-Hodgkin Lymphoma***

The safety data reflect exposure to Zydelig in 146 adults with indolent non-Hodgkin lymphoma treated with Zydelig 150 mg twice daily in clinical trials. The median duration of exposure was 6.1 months (range 0.3 to 26.4 months).

Serious adverse reactions were reported in 73 (50%) subjects. The most frequent serious adverse reactions that occurred were pneumonia (15%), diarrhea (11%), and pyrexia (9%).

Adverse reactions resulted in interruption or discontinuation for 78 (53%) subjects. The most common reasons for interruption or discontinuations were diarrhea (11%), pneumonia (11%), and elevated transaminases (10%).

Table 4 provides the adverse reactions occurring in at least 10% of subjects receiving Zydelig monotherapy, and Table 5 provides the treatment-emergent laboratory abnormalities.

**Table 4 Adverse Reactions (≥ 10% of Subjects) in Patients with Indolent non-Hodgkin Lymphoma Treated with Zydelig 150 mg BID**

Adverse Reaction	Zydelig Monotherapy N=146 (%)	
	Any Grade	Grade ≥3
Gastrointestinal disorders		
diarrhea <sup>(a)</sup>	68 (47)	20 (14)
nausea	42 (29)	2 (1)
abdominal pain <sup>(b)</sup>	38 (26)	3 (2)
vomiting	22 (15)	2 (1)
General disorders and administration site conditions		
fatigue	44 (30)	2 (1)
pyrexia	41 (28)	3 (2)
asthenia	17 (12)	3 (2)
peripheral edema	15 (10)	3 (2)
Infections and infestations		
upper respiratory tract infection	18 (12)	0
Respiratory, thoracic, and mediastinal disorders		
pneumonia <sup>(c)</sup>	37 (25)	23 (16)
cough	42 (29)	1 (1)
dyspnea	25 (17)	6 (4)
Skin and subcutaneous disorders		
rash <sup>(d)</sup>	31 (21)	4 (3)
night sweats	18 (12)	0
Nervous system disorders		
headache	16 (11)	1 (1)
Metabolism and nutrition disorders		
decreased appetite	24 (16)	1 (1)
Psychiatric disorders		
insomnia	17 (12)	0

(a) Diarrhea includes the following preferred terms: diarrhea, colitis, enterocolitis, and gastrointestinal inflammation.

(b) Abdominal pain includes the following preferred terms: abdominal pain, abdominal pain upper, abdominal pain lower, and abdominal discomfort.

(c) Pneumonia includes the terms: pneumonia, pneumonitis, interstitial lung disease, lung infiltration, pneumonia aspiration, respiratory tract infection, atypical pneumonia, lung infection, pneumocystis jiroveci pneumonia, bronchopneumonia, pneumonia necrotizing, lower respiratory tract infection, pneumonia pneumococcal, pneumonia staphylococcal, pneumonia streptococcal, pneumonia cytomegaloviral, and respiratory syncytial virus infection.

(d) Rash includes the following preferred terms: dermatitis exfoliative, rash, rash erythematous, rash macular, rash maculo-papular, rash pruritic, and exfoliative rash.

**Table 5 Treatment-emergent Laboratory Abnormalities in Patients with Indolent non-Hodgkin Lymphoma Treated with Zydelig 150 mg BID**

Laboratory Abnormality	Zydelig Monotherapy N=146 (%)		
	Any Grade	Grade 3	Grade 4
Serum chemistry abnormalities			
ALT increased	73 (50)	20 (14)	7 (5)
AST increased	60 (41)	12 (8)	6 (4)
Hematology abnormalities			
neutrophils decreased	78 (53)	20 (14)	16 (11)
hemoglobin decreased	41 (28)	3 (2)	0
platelets decreased	38 (26)	4 (3)	5 (3)

Grades were obtained per CTCAE version 4.03.

## 6.2 Postmarketing Experience

The following adverse reactions have been identified during post-approval use of Zydelig. Because postmarketing reactions are reported voluntarily from a population of uncertain size, it is not always possible to reliably estimate their frequency or establish a causal relationship to drug exposure.

### Skin and Subcutaneous Disorders

Stevens-Johnson syndrome (SJS), toxic epidermal necrolysis (TEN)

## 7 DRUG INTERACTIONS

### 7.1 Effects of Other Drugs on Zydelig

#### *CYP3A Inducers*

The AUC of idelalisib was reduced by 75% when Zydelig was coadministered with a strong CYP3A inducer. Avoid coadministration of Zydelig with strong CYP3A inducers, such as rifampin, phenytoin, St. John's wort, or carbamazepine [see *Clinical Pharmacology* (12.3)].

#### *CYP3A Inhibitors*

The AUC of idelalisib was increased 1.8-fold when Zydelig was coadministered with a strong CYP3A inhibitor [see *Clinical Pharmacology* (12.3)]. If patients are taking concomitant strong CYP3A inhibitors, monitor for signs of Zydelig toxicity [see *Warnings and Precautions* (5)]. Follow dose modifications for adverse reactions [see *Dosage and Administration* (2.2)].

## 7.2 Effects of Zydelig on Other Drugs

### *CYP3A Substrates*

Zydelig is a strong CYP3A inhibitor. The AUC of a sensitive CYP3A substrate was increased 5.4-fold when Zydelig was coadministered with a sensitive CYP3A substrate. Avoid coadministration of Zydelig with CYP3A substrates [see *Clinical Pharmacology (12.3)*].

## 8 USE IN SPECIFIC POPULATIONS

### 8.1 Pregnancy

Pregnancy Category D [see *Warnings and Precautions (5.9)*]

#### *Risk Summary*

Based on findings in animals, Zydelig may cause fetal harm when administered to a pregnant woman. Idelalisib was teratogenic in animals. If this drug is used during pregnancy, or if the patient becomes pregnant while taking this drug, the patient should be apprised of the potential hazard to a fetus.

#### *Animal Data*

In an embryo-fetal development study, pregnant rats were administered oral doses of idelalisib during the period of organogenesis at 25, 75, and 150 mg/kg/day. Embryo-fetal toxicities were observed at the mid- and high-doses that also resulted in maternal toxicity, based on reductions in maternal body weight gain. Adverse findings at idelalisib doses  $\geq$  75 mg/kg/day included decreased fetal weights, external malformations (short tail), and skeletal variations (delayed ossification and/or unossification of the skull, vertebrae, and sternbrae). Additional findings were observed at 150 mg/kg/day dose of idelalisib and included urogenital blood loss, complete resorption, increased post-implantation loss, and malformations (vertebral agenesis with anury, hydrocephaly, and microphthalmia/anophthalmia). The dose of 75 and 150 mg/kg/day of idelalisib in rats resulted in exposures (AUC) of approximately 12 and 30 times, respectively, the human exposure at the recommended dose of 150 mg twice daily.

### 8.3 Nursing Mothers

It is not known whether idelalisib is excreted in human milk. Because many drugs are excreted in human milk and because of the potential for serious adverse reactions in nursing infants from Zydelig, a decision should be made whether to discontinue nursing or to discontinue the drug, taking into account the importance of the drug to the mother.

### 8.4 Pediatric Use

Safety and effectiveness of Zydelig in children less than 18 years of age have not been established.

## 8.5 Geriatric Use

In clinical trials of Zydelig in patients with FL, SLL, and CLL, 131/208 (63%) patients were age 65 and older. No major differences in effectiveness were observed. In patients 65 years of age or older with indolent non-Hodgkin lymphoma in comparison to younger patients, older patients had a higher incidence of discontinuation due to an adverse reaction (28% vs 20%), higher incidence of serious adverse reactions (64% vs 37%), and higher incidence of death (11% vs 5%). In patients 65 years of age or older with CLL in comparison to younger patients, older patients had a higher incidence of discontinuation due to an adverse reaction (11% vs 5%), higher incidence of serious adverse reactions (51% vs 43%), and higher incidence of death (3% vs 0%).

## 8.6 Females of Reproductive Potential

### *Contraception*

Zydelig may cause fetal harm when administered during pregnancy. Advise females of reproductive potential to avoid becoming pregnant while taking Zydelig. If contraceptive methods are being considered, use effective contraception while taking Zydelig and for at least one month after taking the last dose of Zydelig. Advise patients to contact their healthcare provider if they become pregnant, or if pregnancy is suspected, while taking Zydelig [see *Use in Specific Populations* (8.1)].

## 8.7 Renal Impairment

No dose adjustment of Zydelig is necessary for patients with creatinine clearance (CrCl)  $\geq 15$  mL/min [see *Clinical Pharmacology* (12.3)].

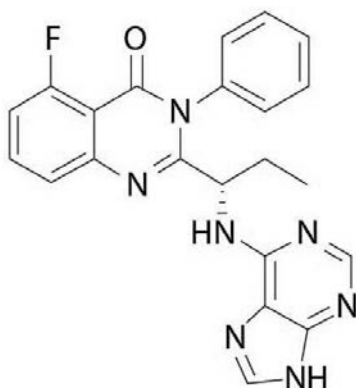
## 8.8 Hepatic Impairment

The AUC of idelalisib increased up to 1.7-fold in subjects with ALT or AST or bilirubin greater than the upper limit of normal (ULN) compared to healthy subjects with normal ALT or AST or bilirubin values [see *Clinical Pharmacology* (12.3)]. Safety and efficacy data are not available in patients with baseline ALT or AST values greater than 2.5 x ULN or bilirubin values greater than 1.5 x ULN, as these patients were excluded from Studies 1 and 2. Patients with baseline hepatic impairment should be monitored for signs of Zydelig toxicity [see *Warnings and Precautions* (5)]. Follow dose modifications for adverse reactions [see *Dosage and Administration* (2.2)].

## 11 DESCRIPTION

Idelalisib is an inhibitor of phosphatidylinositol 3-kinase, PI3K $\delta$ .

The chemical name for idelalisib is 5-fluoro-3-phenyl-2-[(1S)-1-(9H-purin-6-ylamino)propyl]quinazolin-4(3H)-one. It has a molecular formula of C<sub>22</sub>H<sub>18</sub>N<sub>7</sub>O and a molecular weight of 415.42 g/mol. Idelalisib has the following structural formula:



Idelalisib is a white to off-white solid with a pH-dependent aqueous solubility ranging from <0.1 mg/mL at pH 5-7 to over 1 mg/mL at pH 2 under ambient conditions.

Zydelig (idelalisib) tablets are for oral administration. Each tablet contains either 100 mg or 150 mg of idelalisib with the following inactive ingredients: microcrystalline cellulose, hydroxypropyl cellulose, croscarmellose sodium, sodium starch glycolate, magnesium stearate and a tablet coating. The tablet coating consists of polyethylene glycol, talc, polyvinyl alcohol, and titanium dioxide and of FD&C Yellow #6/Sunset Yellow FCF Aluminum Lake (for the 100 mg tablet) and red iron oxide (for the 150 mg tablet).

## 12 CLINICAL PHARMACOLOGY

### 12.1 Mechanism of Action

Idelalisib is an inhibitor of PI3K $\delta$  kinase, which is expressed in normal and malignant B-cells. Idelalisib induced apoptosis and inhibited proliferation in cell lines derived from malignant B-cells and in primary tumor cells. Idelalisib inhibits several cell signaling pathways, including B-cell receptor (BCR) signaling and the CXCR4 and CXCR5 signaling, which are involved in trafficking and homing of B-cells to the lymph nodes and bone marrow. Treatment of lymphoma cells with idelalisib resulted in inhibition of chemotaxis and adhesion, and reduced cell viability.

### 12.2 Pharmacodynamics

#### Electrocardiographic Effects

The effect of Zydelig (150 mg and 400 mg) on the QT/QTc interval was evaluated in a placebo- and positive-controlled (moxifloxacin 400 mg) crossover study in 46 healthy subjects. At a dose 2.7 times the maximum recommended dose, Zydelig did not prolong the QT/QTc interval (i.e., not greater than or equal to 10 ms).



## 12.3 Pharmacokinetics

### Absorption

Following oral administration of a single dose of Zydelig in the fasted state, the median  $T_{max}$  was observed at 1.5 hours.

Idelalisib exposure increased in a less than dose-proportional manner over a dose range of 50 mg to 350 mg twice daily in the fasted state.

Relative to fasting conditions, the administration of a single dose of Zydelig with a high-fat meal increased idelalisib AUC 1.4-fold. Zydelig can be administered without regard to food.

### Distribution

Idelalisib is greater than 84% bound to human plasma proteins with no concentration dependence. The mean blood-to-plasma ratio was 0.7. The population apparent central volume of distribution at steady state is 23 L.

### Metabolism and Elimination

Idelalisib is metabolized to its major metabolite GS-563117 via aldehyde oxidase and CYP3A. GS-563117 is inactive against PI3K $\delta$  in vitro. Idelalisib undergoes minor metabolism by UGT1A4.

The population apparent systemic clearance at steady-state is 14.9 L/hr. The population terminal elimination half-life of idelalisib is 8.2 hours. Following a single dose of 150 mg of [ $^{14}$ C] idelalisib, 78% and 14% of the radioactivity was excreted in feces and urine, respectively. GS-563117 accounted for 49% of the radioactivity in the urine and 44% in the feces.

### Specific Populations

#### *Age, Gender, Race, and Weight*

Population pharmacokinetic analyses indicated that age, gender, race, and weight had no effect on idelalisib exposure.

#### *Pediatric Patients*

The pharmacokinetics of idelalisib has not been studied in pediatric patients.

#### *Patients with Renal Impairment*

A pharmacokinetic study following a single dose of 150 mg of Zydelig was performed in healthy subjects and subjects with severe renal impairment (CrCl 15 to 29 mL/min). Creatinine clearance had no effect on idelalisib exposure. No dose adjustment is needed for patients with CrCl  $\geq$ 15 mL/min.

## ***Patients with Hepatic Impairment***

A pharmacokinetic study of Zydelig was performed in healthy subjects and subjects with hepatic impairment. The geometric mean AUC increased up to 1.7-fold in subjects with ALT or AST or bilirubin values greater than the upper limit of normal (ULN) compared to subjects with normal AST or ALT or bilirubin values. Limited safety and efficacy data are available for patients with baseline AST or ALT greater than 2.5 x ULN or bilirubin greater than 1.5 x ULN, as these patients were excluded from Studies 1 and 2. Patients with baseline hepatic impairment should be monitored for signs of Zydelig toxicity [see *Boxed Warning and Warnings and Precautions (5.1)*]. Follow dose modifications for adverse reactions [see *Dosage and Administration (2.2)*].

## **Drug Interactions**

### ***In Vitro Studies***

Idelalisib is a substrate for aldehyde oxidase, CYP3A, and UGT1A4 in vitro.

Idelalisib inhibits CYP2C8, CYP2C9, CYP3A, and UGT1A1 and GS-563117 inhibits CYP2C8, CYP2C9, CYP2C19, CYP3A and UGT1A1 in vitro. Idelalisib and GS-563117 are not likely to inhibit CYP1A, CYP2B6, and CYP2D6.

Idelalisib induces CYP2B6 and CYP3A4, but does not induce CYP1A2 in vitro. GS-563117 does not induce these enzymes.

Idelalisib and GS-563117 are substrates of P-glycoprotein (P-gp) and BCRP in vitro. Idelalisib is not a substrate of OATP1B1, OATP1B3, OAT1, OAT3, or OCT2. GS-563117 is not a substrate of OATP1B1 or OATP1B3.

Idelalisib inhibits P-gp, OATP1B1, and OATP1B3, and GS-563117 inhibits OATP1B1, OATP1B3 in vitro. Idelalisib is not likely to inhibit BCRP, OCT2, OAT1, or OAT3, and GS-563117 is not likely to inhibit P-gp, BCRP, OCT2, OAT1, or OAT3.

### ***Effect of Other Drugs on Idelalisib***

A single dose of 150 mg of Zydelig was administered alone and after rifampin (a strong CYP3A and P-gp inducer) 600 mg once daily for 8 days in healthy subjects. Rifampin decreased the geometric mean idelalisib AUC by 75% and the geometric mean  $C_{max}$  by 58%. Avoid coadministration of Zydelig with strong CYP3A and P-gp inducers.

A single dose of 400 mg of Zydelig was administered alone and after ketoconazole (a strong CYP3A and P-gp inhibitor) 400 mg daily for 4 days in healthy subjects. Ketoconazole increased the geometric mean idelalisib AUC by 1.8-fold. No changes in the geometric mean  $C_{max}$  were observed. Patients taking concomitant CYP3A inhibitors should be monitored for signs of Zydelig toxicity [see *Warnings and Precautions (5)*]. Follow dose modifications for adverse reactions [see *Dosage and Administration (2.2)*].

### ***Effect of Idelalisib on Other Drugs***

A single oral dose of midazolam 5 mg was administered alone and after Zydelig 150 mg for 15 doses in healthy subjects. The geometric mean midazolam C<sub>max</sub> increased by 2.4-fold and the geometric mean midazolam AUC increased by 5.4-fold. Avoid coadministration of Zydelig with CYP3A substrates, as Zydelig is a strong CYP3A inhibitor.

A single dose of 10 mg of rosuvastatin (OATP1B1 and OATP1B3 substrate) was administered alone and after Zydelig 150 mg for 12 doses in healthy subjects. No changes in exposure to rosuvastatin were observed.

A single dose of 0.5 mg of digoxin (P-gp substrate) was administered alone and after Zydelig 150 mg for 19 doses in healthy subjects. No changes in exposure to digoxin were observed.

## **13 NONCLINICAL TOXICOLOGY**

### **13.1 Carcinogenesis, Mutagenesis, Impairment of Fertility**

Carcinogenicity studies with idelalisib have not been conducted.

Idelalisib did not induce mutations in the bacterial mutagenesis (Ames) assay and was not clastogenic in the in vitro chromosome aberration assay using human peripheral blood lymphocytes. Idelalisib was genotoxic in males in the in vivo rat micronucleus study at a high dose of 2000 mg/kg.

Idelalisib may impair fertility in humans. In a fertility study, treated male rats (25, 50, or 100 mg/kg/day of idelalisib) were mated with untreated females. Decreased epididymidal and testicular weights were observed at all dose levels and reduced sperm concentration at the mid- and high doses; however, there were no adverse effects on fertility parameters. The low dose in males resulted in an exposure (AUC) that is approximately 50% of the exposure in patients at the recommended dose of 150 mg twice daily.

In a separate fertility study, treated female rats (25, 50, or 100 mg/kg/day of idelalisib) were mated with untreated males. There were no adverse effects on fertility parameters; however, there was a decrease in the number of live embryos at the high dose. The high dose in females resulted in an exposure (AUC) that is approximately 17-fold the exposure in patients at the recommended dose of 150 mg twice daily.

### **13.2 Animal Pharmacology and/or Toxicology**

Toxicities observed in animals and not reported in patients include cardiac toxicity (cardiomyopathy, inflammation, and increased heart weight) and pancreatic findings (inflammation, hemorrhage, and low-incidence acinar degeneration and hyperplasia). These findings were observed in Sprague-Dawley rats in toxicology studies at

exposures (AUCs) higher than those reported in patients at the recommended dose of 150 mg twice daily. Cardiac inflammation was mainly seen in a 28-day study in rats, the other findings were observed in the 13-week and/or 6-month studies.

## 14 CLINICAL STUDIES

### 14.1 Relapsed Chronic Lymphocytic Leukemia

Zydelig was evaluated in a randomized, double-blind, placebo-controlled study (Study 1) in 220 subjects with relapsed CLL who required treatment and were unable to tolerate standard chemoimmunotherapy due to coexisting medical conditions, reduced renal function as measured by creatinine clearance <60 mL/min, or NCI CTCAE Grade ≥3 neutropenia or Grade ≥3 thrombocytopenia resulting from myelotoxic effects of prior therapy with cytotoxic agents. Subjects were randomized 1:1 to receive 8 doses of rituximab (first dose at 375 mg/m<sup>2</sup>, subsequent doses at 500 mg/m<sup>2</sup> every 2 weeks for 4 infusions and every 4 weeks for an additional 4 infusions) in combination with either an oral placebo twice daily or with Zydelig 150 mg taken twice daily until disease progression or unacceptable toxicity.

In Study 1, the median age was 71 (range 47, 92) with 78% over 65, 66% were male, and 90% were Caucasian. The median time since diagnosis was 8.5 years. The median number of prior therapies was 3. Nearly all (96%) subjects had received prior anti-CD20 monoclonal antibodies. The most common (>15%) prior regimens were: bendamustine + rituximab (98 subjects, 45%), fludarabine + cyclophosphamide + rituximab (75 subjects, 34%), single-agent rituximab (67 subjects, 31%), fludarabine + rituximab (37 subjects, 17%), and chlorambucil (36 subjects, 16%).

The primary endpoint was progression free survival (PFS), as assessed by an independent review committee (IRC). The trial was stopped for efficacy following the first pre-specified interim analysis. Results of a second interim analysis continued to show a statistically significant improvement for Zydelig + rituximab over placebo + rituximab for the primary endpoint of PFS (HR: 0.18, 95% CI [0.10, 0.32], p < 0.0001). The efficacy results are shown in Table 6 and the Kaplan-Meier curve for PFS is shown in Figure 1.

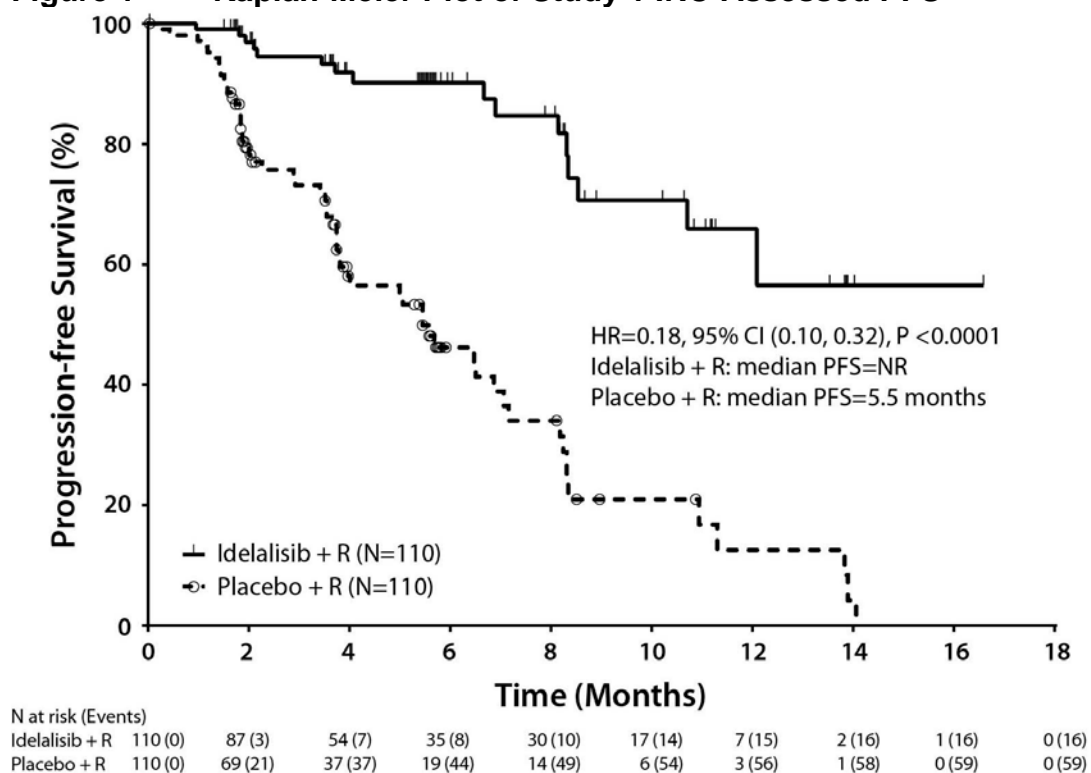
**Table 6 Efficacy Results from Study 1**

	<b>Zydelig + R n=110</b>	<b>Placebo + R n=110</b>
<b>PFS</b> Median (months) (95% CI)	NR (10.7, NR)	5.5 (3.8, 7.1)
Hazard ratio (95% CI)	0.18 (0.10, 0.32)	
P-value	< 0.0001 †	

R: rituximab; PFS: progression-free survival; NR: not reached

† The p value for PFS was based on stratified log-rank test.

**Figure 1 Kaplan-Meier Plot of Study 1 IRC-Assessed PFS**



## 14.2 Relapsed Follicular B-cell non-Hodgkin Lymphoma

The safety and efficacy of Zydelig in patients with FL was evaluated in a single-arm, multicenter clinical trial which included 72 patients with follicular B-cell non-Hodgkin lymphoma who had relapsed within 6 months following rituximab and an alkylating agent and had received at least 2 prior treatments. The median age was 62 years (range 33 to 84), 54% were male, and 90% were Caucasian. At enrollment, 92% of patients had a baseline ECOG performance status of 0 or 1. The median time since diagnosis was 4.7 years and the median number of prior treatments was 4 (range 2 to 12). The most common prior combination regimens were R-CHOP (49%), BR (50%), and R-CVP (28%). At baseline, 33% of patients had extranodal involvement and 26% had bone marrow involvement.

Patients received 150 mg of Zydelig orally twice daily until evidence of disease progression or unacceptable toxicity. Tumor response was assessed according to the revised International Working Group response criteria for malignant lymphoma. The primary endpoint was Independent Review Committee-assessed overall response rate (ORR). Efficacy results are summarized in Table 7.

**Table 7 Overall Response Rate (ORR) and Duration of Response (DOR) in Patients with Relapsed Follicular Lymphoma**

	<b>N=72</b>
ORR	39 (54%)
95% CI	(42, 66%)
CR	6 (8%)
PR	33 (46%)
Median* DOR, months (range)	median not evaluable (0.0+, 14.8+)

CI = confidence interval; CR = complete response; PR = partial response

\* Kaplan-Meier estimate

The median time to response was 1.9 months (range 1.6–8.3).

### 14.3 Relapsed Small Lymphocytic Lymphoma

The safety and efficacy of Zydelig in patients with SLL was evaluated in a single-arm, multicenter clinical trial which included 26 patients with small lymphocytic lymphoma who had relapsed within 6 months following rituximab and an alkylating agent and had received at least 2 prior treatments. The median age was 65 years (range 50 to 87), 73% were male, and 81% were Caucasian. At enrollment, 96% of patients had a baseline ECOG performance status of 0 or 1. The median time since diagnosis was 6.7 years and the median number of prior treatments was 4 (range 2 to 9). The most common prior combination regimens were BR (81%), FCR (62%) and R-CHOP (35%). At baseline, 27% of patients had extranodal involvement.

Subjects received 150 mg of Zydelig orally twice daily until evidence of disease progression or unacceptable toxicity. Tumor response was assessed according to the revised International Working Group response criteria for malignant lymphoma. The primary endpoint was Independent Review Committee-assessed overall response rate (ORR). Efficacy results are summarized in Table 8.

**Table 8 Overall Response Rate (ORR) and Duration of Response (DOR) in Patients with Relapsed Small Lymphocytic Lymphoma**

	<b>N=26</b>
ORR	15 (58%)
95% CI	(37, 77%)
CR	0
PR	15 (58%)
Median* DOR, months (range)	11.9 (0.0+, 14.7+)

CI = confidence interval; CR = complete response; PR = partial response

\* Kaplan-Meier estimate

The median time to response was 1.9 months (range 1.6–8.3).

## 16 HOW SUPPLIED/STORAGE AND HANDLING

Zydelig tablets supplied as follows:

Tablet Strength	Package Configuration	NDC No.	Description of Tablet; Debossed on Tablet
150 mg	High density polyethylene (HDPE) bottle with a polyester fiber coil, capped with a child-resistant closure. Each bottle contains 60 film-coated tablets.	61958-1702-1	Oval shaped; pink; "150" on one side and "GSI" on the other side
100 mg		61958-1701-1	Oval-shaped; orange; "100" on one side and "GSI" on the other side

Store between 20–30 °C (68–86 °F) with excursions permitted 15–30 °C (59–86 °F).

- Dispense only in original container.
- Do not use if seal over bottle opening is broken or missing.

## 17 PATIENT COUNSELING INFORMATION

Advise the patient to read the FDA-approved patient labeling (Medication Guide).

Physicians and health care professionals are advised to discuss the following with patients prior to treatment with Zydelig:

- **Hepatotoxicity**

Advise patients that Zydelig can cause significant elevations in liver enzymes, and that serial testing of serum liver tests (ALT, AST, and bilirubin) are recommended while taking Zydelig [see *Warnings and Precautions (5.1)*]. Advise patients to report symptoms of liver dysfunction including jaundice, bruising, abdominal pain, or bleeding.

- **Severe Diarrhea or Colitis**

Advise patients that Zydelig may cause severe diarrhea or colitis and to notify their healthcare provider immediately if the number of bowel movements in a day increases by six or more [see *Warnings and Precautions (5.2)*].

- **Pneumonitis**

Advise patients of the possibility of pneumonitis, and to report any new or worsening respiratory symptoms including cough or dyspnea [see *Warnings and Precautions (5.3)*].

- **Infections**

Advise patients that Zydelig can cause serious infections that may be fatal. Advise patients to immediately report symptoms of infection (e.g. pyrexia) [see *Warnings and Precautions (5.4)*].

- **Intestinal Perforation**

Advise patients of the possibility for intestinal perforation and to notify their healthcare provider immediately if they experience severe abdominal pain [see *Warnings and Precautions (5.5)*].

- **Severe Cutaneous Reactions**

Advise patients that Zydelig may cause severe cutaneous reactions and to notify their healthcare provider immediately if they develop a severe skin reaction [see *Warnings and Precautions (5.6)*].

- **Anaphylaxis**

Advise patients that anaphylaxis can occur during treatment with Zydelig and to notify their healthcare provider immediately if they experience symptoms of anaphylaxis [see *Warnings and Precautions (5.7)*].

- **Neutropenia**

Advise patients of the need for periodic monitoring of blood counts. Advise patients to notify their healthcare provider immediately if they develop a fever or any signs of infection [see *Warnings and Precautions (5.8)*].

- **Pregnancy and Nursing**

Advise women of the potential hazard to the fetus and to avoid pregnancy during treatment with Zydelig. If contraceptive methods are being considered, advise to use adequate contraception during therapy and for at least one month after completing therapy. Also advise patients not to breastfeed while taking Zydelig [see *Warnings and Precautions (5.9) and Use in Specific Populations (8.1, 8.3, and 8.6)*].

- **Instructions for Taking Zydelig**

Advise patients to take Zydelig exactly as prescribed and not to change their dose or to stop taking Zydelig unless they are told to do so by their healthcare provider. Zydelig may be taken with or without food. Zydelig tablets should be swallowed whole. Advise patients that if a dose of Zydelig is missed by less than 6 hours, to take the missed dose right away and take the next dose as usual. If a dose of Zydelig is missed by more than 6 hours, advise patients to wait and take the next dose at the usual time.



Manufactured and distributed by:

Gilead Sciences, Inc.

Foster City, CA 94404

GSI and Zydelig are trademarks or registered trademarks of Gilead Sciences, Inc., or its related companies. All other trademarks referenced herein are the property of their respective owners.

©2016 Gilead Sciences, Inc. All rights reserved.

205858-GS-001-PI

**MEDICATION GUIDE**  
**ZYDELIG® (zye-DEL-ig)**  
**(idelalisib)**  
**tablets**

**What is the most important information I should know about Zydelig?**

**Zydelig can cause serious side effects that can lead to death, including:**

- **Liver problems.** Abnormal liver blood test results are common during treatment with Zydelig. Zydelig can cause severe liver problems. Your doctor will do blood tests before and during your treatment with Zydelig to check for liver problems. Tell your doctor right away if you get any of the following symptoms of liver problems:
  - yellowing of your skin or the white part of your eyes (jaundice)
  - dark or brown (tea colored) urine
  - pain in the upper right side of your stomach area (abdomen)
  - bleeding or bruising more easily than normal
- **Severe diarrhea.** Diarrhea is common during treatment with Zydelig and can sometimes be severe. Tell your doctor right away if the number of bowel movements you have in a day increases by six or more. Ask your doctor about medicines you can take to treat your diarrhea.
- **Lung or breathing problems.** Your doctor may do tests to check your lungs if you have breathing problems during treatment with Zydelig. Tell your doctor right away if you get new or worsening cough, shortness of breath, difficulty breathing, or wheezing.
- **Infections.** Zydelig can cause serious infections that may lead to death. Tell your doctor right away if you have a fever or any signs of an infection while taking Zydelig.
- **Tear in intestinal wall (perforation).** Tell your doctor or get medical help right away if you get new or worsening stomach area (abdomen) pain, chills, fever, nausea, or vomiting.
- **Severe skin reactions.** Tell your doctor right away if you get any of the following symptoms during treatment with Zydelig:
  - painful sores or ulcers on your skin, lips, or in your mouth
  - severe rash with blisters or peeling skin
  - rash with itching

If you have any of the above serious side effects during treatment with Zydelig, your doctor may completely stop your treatment, stop your treatment for a period of time, or change your dose of Zydelig.

See “**What are the possible side effects of Zydelig?**” for more information about side effects.

**What is Zydelig?**

Zydelig is a prescription medicine used to treat people with:

- **Chronic Lymphocytic Leukemia (CLL)** in combination with rituximab when CLL comes back after prior cancer treatment and when rituximab treatment alone may be used due to other health problems.
- **Follicular B-cell non-Hodgkin Lymphoma (FL)** when the disease has come back after treatment with at least two prior medicines.
- **Small Lymphocytic Lymphoma (SLL)** when the disease comes back after treatment with at least two prior medicines.

Zydelig should not be used as the first medicine to treat people who have been diagnosed with CLL, FL, or SLL.

It is not known if Zydelig is safe and effective in children less than 18 years of age.

**Do not take Zydelig** if you have a history of serious allergic reactions including a severe skin reaction called toxic epidermal necrolysis (TEN).

**What should I tell my doctor before taking Zydelig?**

**Before taking Zydelig, tell your doctor about all of your medical conditions, including if you:**

- have liver problems
- have lung or breathing problems
- have an infection
- are pregnant or plan to become pregnant. Zydelig may harm your unborn baby. Females who are able to become pregnant should use effective birth control (contraception) during treatment with Zydelig and for at least 1 month after the last dose of Zydelig. Talk to your doctor about birth control methods that may be right for you. Tell your doctor right away if you become pregnant or think you are pregnant during treatment with Zydelig.
- are breastfeeding or plan to breastfeed. It is not known if Zydelig passes into your breast milk. You and your doctor should decide if you will take Zydelig or breastfeed. You should not do both.

**Tell your doctor about all the medicines you take**, including prescription and over-the-counter medicines, vitamins, and herbal supplements. Zydelig and certain other medicines may affect each other.

Know the medicines you take. Keep a list of your medicines and show it to your doctor and pharmacist when you get a new medicine.

### How should I take Zydelig?

- Take Zydelig exactly as your doctor tells you to take it.
- Your doctor may change your dose of Zydelig or tell you to stop taking Zydelig. Do not change your dose or stop taking Zydelig without first talking to your doctor.
- Take Zydelig 2 times a day.
- You may take Zydelig with or without food.
- Take Zydelig tablets whole.
- Do not miss a dose of Zydelig. If you miss a dose of Zydelig by less than 6 hours, take the missed dose right away. Then take your next dose as usual. If you miss a dose of Zydelig by more than 6 hours, wait and take the next dose of Zydelig at your usual time.

### What are the possible side effects of Zydelig?

Zydelig can cause serious side effects, including:

- See “**What is the most important information I should know about Zydelig?**”
- **Anaphylaxis.** Tell your doctor or get medical help right away if you have a serious allergic reaction while taking Zydelig.
- **Low white blood cell count (neutropenia).** Neutropenia is common during treatment with Zydelig and can sometimes be severe. Your doctor will check your blood counts regularly during treatment with Zydelig. Tell your doctor right away if you have a fever or any signs of an infection while taking Zydelig.

#### The most common side effects of Zydelig when used alone include:

- tiredness
- nausea
- cough
- fever
- stomach area (abdomen) pain
- pneumonia
- rash

#### The most common side effects of Zydelig when used in combination with rituximab include:

- pneumonia
- fever
- tiredness
- rash
- cough
- nausea

Tell your doctor if you have any side effect that bothers you or that does not go away.

These are not all the possible side effects of Zydelig. Call your doctor for medical advice about side effects. You may report side effects to FDA at 1-800-FDA-1088.

### How should I store Zydelig?

- Store Zydelig between 68°F to 86°F (20°C to 30°C).
- Keep Zydelig in its original container.
- Do not use Zydelig if the seal over the bottle opening is broken or missing.

**Keep Zydelig and all medicines out of reach of children.**

### General information about Zydelig

Medicines are sometimes prescribed for purposes other than those listed in a Medication Guide. Do not use Zydelig for a condition for which it was not prescribed. Do not give Zydelig to other people, even if they have the same symptoms you have. It may harm them. You can ask your doctor or pharmacist for information about Zydelig that is written for health professionals.

### What are the ingredients in Zydelig?

**Active ingredient:** idelalisib

**Inactive ingredients:** microcrystalline cellulose, hydroxypropyl cellulose, croscarmellose sodium, sodium starch glycolate, and magnesium stearate.

The tablet coating contains polyethylene glycol, talc, polyvinyl alcohol, titanium dioxide and FD&C Yellow #6 or Sunset Yellow (for the 100 mg tablet) and red iron oxide (for the 150 mg tablet).

Manufactured and distributed by: Gilead Sciences, Inc. Foster City, CA 94404

©2016 Gilead Sciences, Inc. All rights reserved

For more information, call 1-800-445-3235 or go to [www.Zydelig.com](http://www.Zydelig.com).

205858-GS-001-MG

This Medication Guide has been approved by the U.S. Food and Drug Administration.

Revised: 09 2016